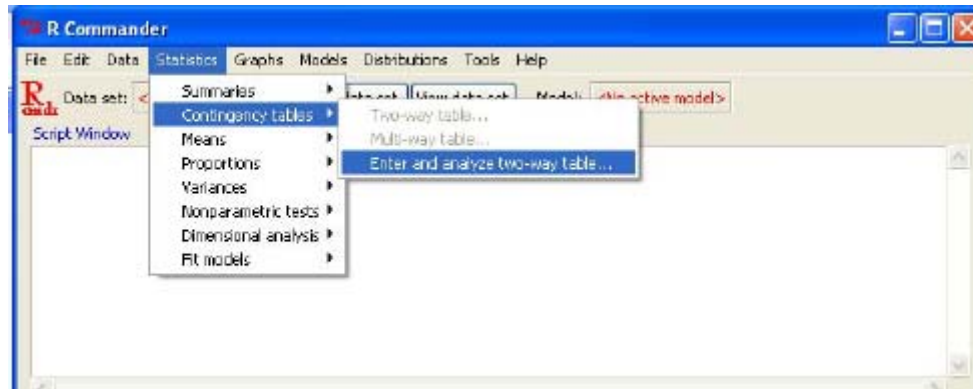


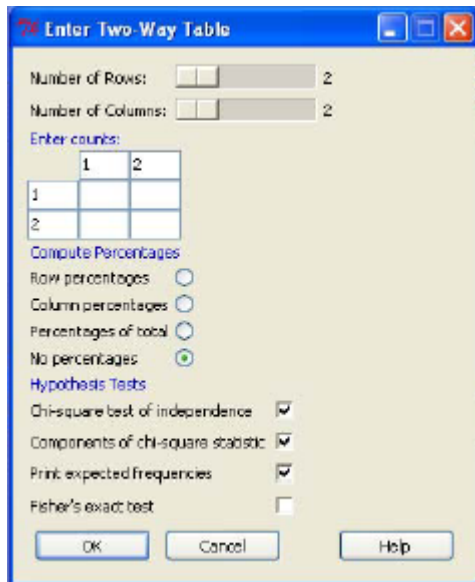
## How to use R Commander for Contingency Tables (Section 6.4)

*Statistics* → *Contingency tables* → *Enter and analyze two-way table...*

The screen shot below shows where to find these in the menu structure:



You should see a pop-up box like the one below. Check the first 3 boxes under “Hypothesis Tests” as shown in the screen shot. The default is to get the chi-square test statistic and p-value. Checking these boxes will give you the contributions from each cell, and the expected counts. If you want row, column, or total percentages, check those boxes as well.



Enter the data into the cells of the table, then click “OK”. The results should look like this (these are the results for the nicotine patch example):

```
Pearson's Chi-squared test

data: .Table
X-squared = 19.2, df = 1, p-value = 1.177e-05

> .Test$expected # Expected Counts
  1  2
1 40 80
2 40 80

> round(.Test$residuals^2, 2) # Chi-square Components
  1  2
1 6.4 3.2
2 6.4 3.2
```