

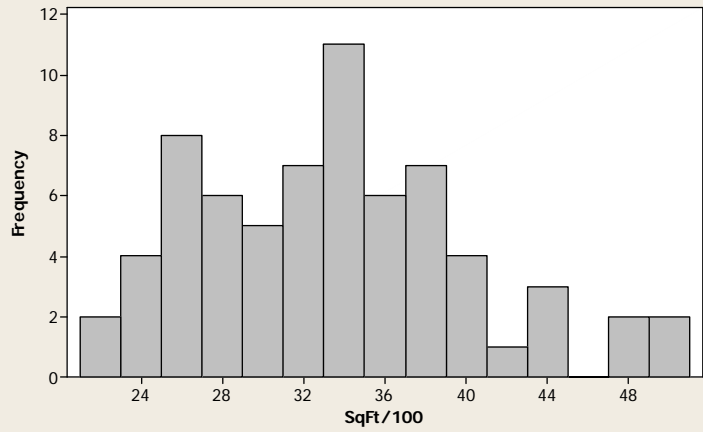
Real Estate Data from Appendix C7, Quality = 1 (High) Houses Only
Case Diagnostics
n = 68, p = 4 (Intercept, SqFt/100, Bedrooms, LotSize)
Y = Sales Price; variance appeared constant for this subset of the data

	ID	SqFt/100	Bedrooms	LotSize	Salesprice	Y-HAT	TRES1	HI1	DFIT1	COOK1
1.	12	27.91	3	30595	559000	535383	0.21532	0.029996	0.037864	0.000364
2.	13	33.81	5	23172	535000	502989	0.29219	0.031605	0.052785	0.000707
3.	14	34.59	5	35351	525000	541479	-0.15056	0.034314	-0.028380	0.000204
4.	58	22.83	3	18524	420000	454809	-0.32232	0.058707	-0.080494	0.001643
5.	69	25.58	2	24601	585000	533138	0.48132	0.061086	0.122769	0.003814
6.	70	40.00	6	23595	549900	529166	0.19196	0.059439	0.048256	0.000591
7.	71	39.42	4	18920	675000	583363	0.84360	0.038527	0.168868	0.007161
8.	72	38.89	4	28378	830000	602067	2.15292	0.030421	0.381348	0.034403
9.	73	38.57	4	32793	920000	610082	3.02687	0.032473	0.554524	0.068179
10	74	47.56	4	22215	855000	671882	1.79302	0.116724	0.651806	0.102660
11	75	33.02	4	26463	585500	539400	0.41748	0.014788	0.051147	0.000663
12	76	26.29	3	24778	399000	504711	-0.97232	0.033321	-0.180520	0.008154
13	77	44.18	5	22024	790000	602236	1.77571	0.054019	0.424331	0.043549
14	78	47.46	4	23368	665000	673813	-0.08408	0.114662	-0.030259	0.000233
15	79	32.42	3	27173	725000	571154	1.42443	0.029820	0.249726	0.015344
16	80	24.64	3	31703	647000	505975	1.31121	0.042509	0.276277	0.018870
17	81	44.19	4	56127	780000	724466	0.54710	0.165858	0.243957	0.015043
18	82	38.77	3	24639	657500	627295	0.28076	0.066233	0.074773	0.001418
19	83	38.08	5	23324	578000	545436	0.29659	0.027290	0.049677	0.000626
20	84	33.76	5	18452	500000	490557	0.08642	0.038011	0.017179	0.000075
21	85	29.40	3	20639	484530	524877	-0.36814	0.030088	-0.064840	0.001065
22	86	26.54	5	12821	609000	405193	1.98994	0.101693	0.669534	0.107115
23	87	26.72	4	28049	635000	481353	1.42789	0.036877	0.279402	0.019205
24	88	33.86	4	24008	519000	541464	-0.20330	0.015595	-0.025589	0.000166

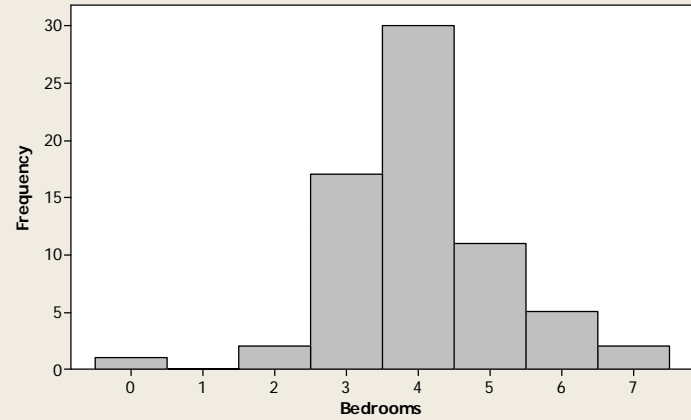
25	89	36.48	4	26604	625100	573839	0.46550	0.019571	0.065768	0.001095
26	90	34.55	4	22468	585444	544366	0.37235	0.017216	0.049282	0.000615
27	91	33.21	3	15012	399900	548174	-1.38221	0.044687	-0.298947	0.022029
28	92	28.17	4	31214	389900	503642	-1.04551	0.029835	-0.183345	0.008392
29	93	32.10	3	30033	649000	575236	0.67485	0.030389	0.119471	0.003599
30	94	35.88	4	22530	535000	557624	-0.20516	0.019532	-0.028957	0.000213
31	95	27.05	3	22196	640000	505667	1.24081	0.032541	0.227566	0.012838
32	96	23.44	4	86004	600000	595640	0.05087	0.408217	0.042250	0.000453
33	97	42.64	5	24983	582500	594551	-0.11054	0.042180	-0.023196	0.000137
34	98	26.15	3	21722	545000	495602	0.45235	0.036024	0.087446	0.001936
35	99	36.08	6	25219	480000	494660	-0.13630	0.067676	-0.036723	0.000342
36	100	24.79	4	29805	595000	466783	1.19542	0.052064	0.280157	0.019491
37	101	32.51	3	25570	610000	567985	0.38337	0.030016	0.067439	0.001152
38	102	25.47	2	21789	570000	524941	0.41839	0.062913	0.108409	0.002977
39	103	50.32	7	22000	479000	590921	-1.09131	0.136520	-0.433931	0.046934
40	104	49.73	6	56139	545000	707332	-1.65376	0.189955	-0.800838	0.156104
41	105	25.82	4	23256	335000	460364	-1.16380	0.044982	-0.252578	0.015861
42	106	31.39	6	21810	629000	439838	1.83948	0.102180	0.620559	0.092816
43	107	35.16	4	19867	505500	543795	-0.34774	0.020955	-0.050874	0.000656
44	108	21.29	0	37414	528750	595025	-0.67243	0.211663	-0.348426	0.030612
45	109	29.36	4	16437	370000	477986	-0.99408	0.034297	-0.187338	0.008776
46	110	33.51	5	24216	529000	502675	0.24026	0.031809	0.043549	0.000481
47	111	31.36	4	27158	490000	524806	-0.31532	0.016734	-0.041136	0.000429
48	112	35.25	4	27501	535000	563992	-0.26257	0.016570	-0.034082	0.000295
49	113	39.17	6	37972	612000	557357	0.50956	0.069627	0.139397	0.004915
50	114	27.02	4	39643	442500	513635	-0.65743	0.050197	-0.151136	0.005762
51	115	36.44	3	21895	500000	597402	-0.90266	0.049711	-0.206454	0.010687
52	116	30.72	4	25158	539000	513443	0.23167	0.018568	0.031866	0.000258
53	117	32.33	4	22961	545500	523745	0.19700	0.016801	0.025753	0.000168
54	118	29.18	4	22003	424000	490292	-0.60474	0.026158	-0.099112	0.002480

55	119	32.66	4	16640	325000	511006	-1.73110	0.025491	-0.279979	0.019004
56	120	29.40	4	22003	367000	492459	-1.15261	0.025240	-0.185473	0.008556
57	121	34.30	3	25018	470000	584222	-1.05364	0.036417	-0.204832	0.010471
58	122	24.72	4	21784	393000	445805	-0.48863	0.055467	-0.118410	0.003547
59	123	28.78	4	68351	530000	603589	-0.74010	0.196481	-0.365976	0.033723
60	124	25.37	3	11053	400000	460931	-0.56612	0.061874	-0.145389	0.005341
61	125	38.58	4	22224	403500	583446	-1.67624	0.030041	-0.294999	0.021158
62	126	27.42	3	22306	550000	509590	0.36897	0.031437	0.066474	0.001120
63	127	34.60	5	18571	380000	499133	-1.09921	0.035419	-0.210634	0.011056
64	128	38.36	5	48465	500000	611788	-1.05128	0.072964	-0.294935	0.021711
65	129	44.53	7	15595	465000	517685	-0.50741	0.127779	-0.194210	0.009540
66	130	40.80	5	22134	451500	569219	-1.08575	0.035124	-0.207156	0.010699
67	131	33.01	3	18741	336000	555637	-2.07671	0.037047	-0.407333	0.039439
68	132	38.28	4	17051	550000	567406	-0.15913	0.03557793	-0.03056393	0.0002371

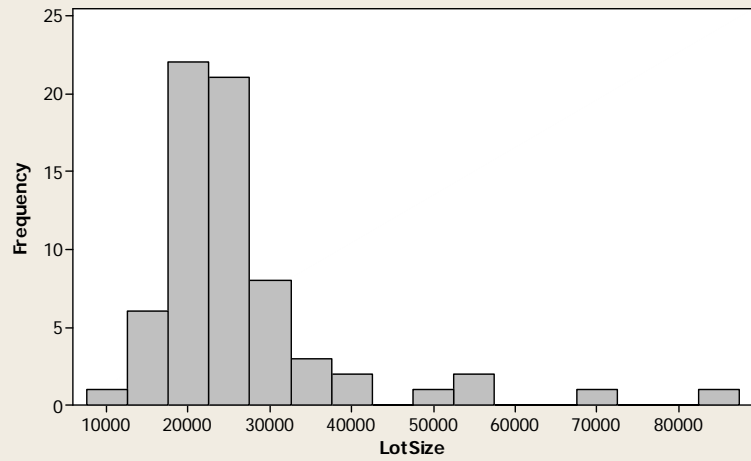
Histogram of SqFt/100



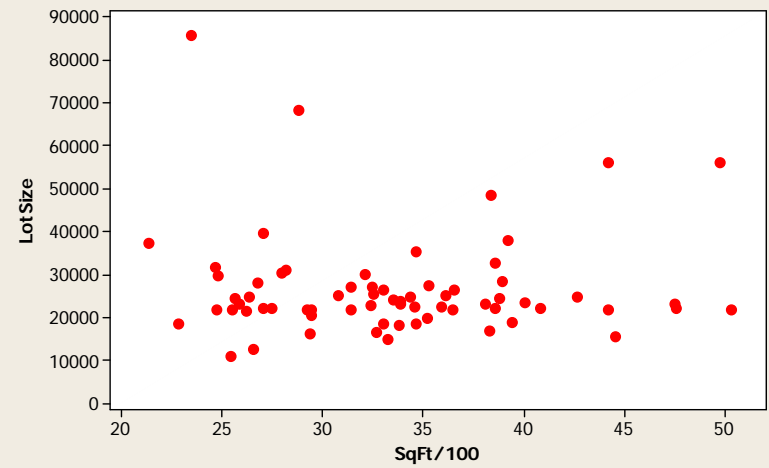
Histogram of Bedrooms



Histogram of LotSize



Scatterplot of LotSize vs SqFt/100



Interesting Plot Created by R:

```
> Price<-  
lm(Salesprice~SqFt.100+Bedrooms+LotSize,data=Quality1)  
> summary(Price)  
Coefficients:  
                Estimate Std. Error t value Pr(>|t|)  
(Intercept) 290668.159   74819.297    3.885 0.000245 ***  
SqFt.100     9850.567    2474.930    3.980 0.000178 ***  
Bedrooms    -35868.053   14522.725   -2.470 0.016197 *  
LotSize       2.530        1.111    2.277 0.026138 *  
Residual standard error: 110500 on 64 degrees of freedom  
Multiple R-squared:  0.2414, Adjusted R-squared:  0.2059  
F-statistic: 6.789 on 3 and 64 DF,  p-value: 0.0004797  
> plot(Price)  
> #Creates a series of plots, shown by clicking through  
them.
```

